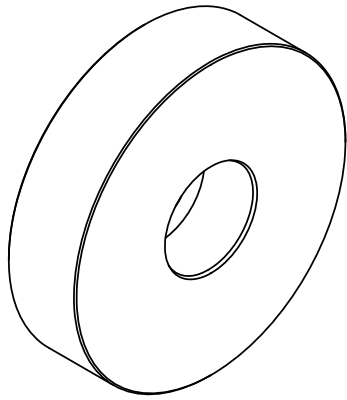
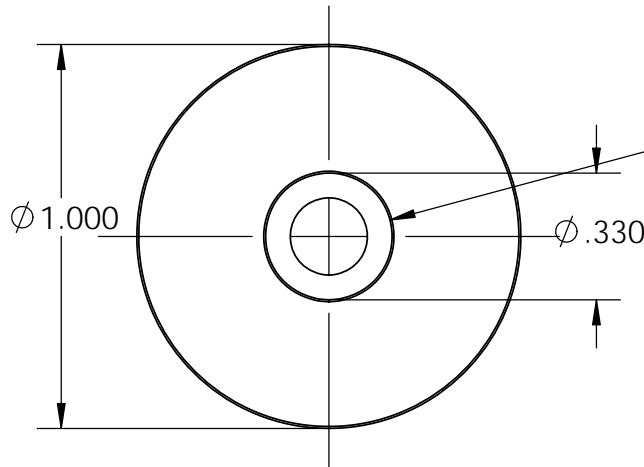


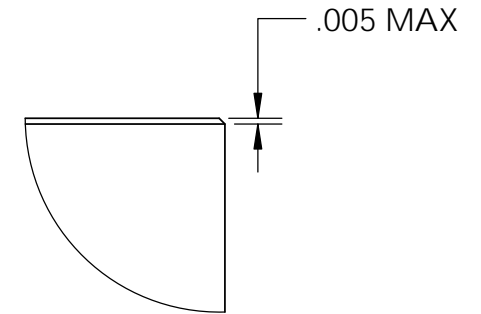
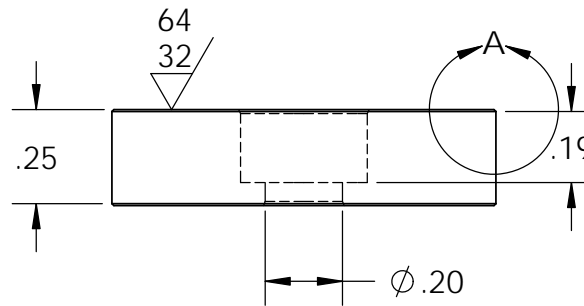
REVISIONS			
REV.	DESCRIPTION	DATE	APPROVED
A	Made Counter Bore same as SP-127	12/30/2013	J.K.



Isometric View



- Ⓐ ϕ .20 THRU ALL
- ⓐ ϕ .330 ∇ .190
- ✓ ϕ .34 X 51°, NEAR SIDE
- ✓ ϕ .21 X 45°, FAR SIDE



DETAIL A
SCALE 6 : 1

Plating Details:

Process: Electroless Nickel MID Phosphorous

Thickness: 0.0002" to 0.0003"

Handling: Must be individually Racked
(No barrel plating)

PROPRIETARY AND CONFIDENTIAL
THE INFORMATION CONTAINED IN THIS DRAWING IS THE SOLE PROPERTY OF APW COMPANY. ANY REPRODUCTION IN PART OR AS A WHOLE WITHOUT THE WRITTEN PERMISSION OF APW COMPANY IS PROHIBITED.

		UNLESS OTHERWISE SPECIFIED:		NAME	DATE
		DIMENSIONS ARE IN INCHES	DRAWN	J.K.	12.19.13
		TOLERANCES:	CHECKED		
		FRACTIONAL \pm .015	ENG APPR.	J.K.	12.30.13
		ANGULAR: MACH \pm 2 BEND \pm 2	MFG APPR.	J.K.	12.30.13
		TWO PLACE DECIMAL \pm .010	Q.A.		
		THREE PLACE DECIMAL \pm .005	COMMENTS:		
		INTERPRET GEOMETRIC TOLERANCING PER: ANSI			
		MATERIAL			
		1215 CRS			
NEXT ASSY	USED ON	FINISH			
APPLICATION		DO NOT SCALE DRAWING			

APW COMPANY		
TITLE:		
EM100 Strike Plate		
SIZE	DWG. NO.	REV
A	SP-100	A
SCALE: 2:1	WEIGHT:	SHEET 1 OF 1